



Crescent Fire District and Central Cascades Fire and EMS

Dual Resident Student Program



Goal

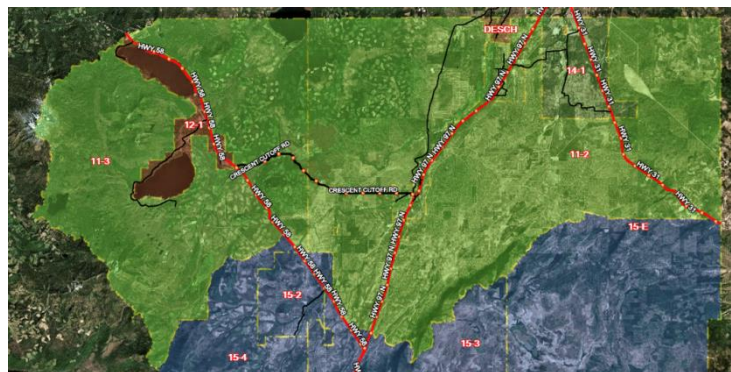
To gain invaluable experience and knowledge of daily operations in the fire house and on the scene of Fire and Emergency Medical Service Incidents, by working alongside experienced and knowledgeable mentors to learn the principles of firefighting, fire prevention, rescue and extrication, emergency medical services, and customer service. Using hands-on experience and training, day to day operations, and classroom time.

History

Gilchrist, home to our administration building, was established in 1937 to accommodate the Gilchrist Timber Company. It was a rural community that provided all the needs of the workers and their families to live and prosper including; housing, schools, and stores. The mill was established with a log pond on the west side of Highway 97 and grid-like housing and commercial buildings on the east side. Crescent Fire District was established in 1959 by a group of dedicated volunteers with the goal to provide Fire and EMS services to the communities of North Klamath County. CRFPD grew with the community to provide the services that it needed and in the early to mid-1990s became a combination department with the introduction of its first career staff. West of Gilchrist and Crescent on Highway 58 nestled between Crescent and Odell Lakes is Central Cascades Fire and EMS (CCFEMS). CCFEMS was established in 1995 to provide Fire and Emergency Medical Response to the Crescent and Odell Lakes area as well as the Willamette Pass Ski Resort. Both CRFPD and CCFEMS work closely together to provide Fire and Emergency Medical Response.

The Organizations

CRFPD is located approx. 45 minutes south of Bend off of Highway 97. Staffing consists of a Fire Chief, 2 Career Firefighter/Paramedics, and an Office Administrator/EMT-Advanced who work alongside a group of 15 dedicated volunteers to respond to approx. 450 calls a year. The district responds to; structure fire and wildland



Green area CRFPD Ambulance Service Area
and Brown area is CCFEMS Fire District.

fires, rescue and vehicle extrications, and emergency medical incidents with a fleet of apparatus. Our fire district spans 13.4 square miles and we provide Advanced Life Support (ALS) Ambulance Service that covers 591 square miles serving approx. 2,000 residents year around. Our Ambulance covers Northern Klamath County including the communities of Crescent, Gilchrist, Crescent Lake, Oregon Outback, and the South End of LaPine.

CCFEMS is located approx. 16 miles west of Crescent, just a short drive up the Crescent Cutoff Road to Highway 58. CCFEMS is located centrally to three lakeside resorts and the Willamette Pass Ski Resort. CCFEMS currently includes 1 Fire Chief, 1 Division Chief, 1 Volunteer Deputy Chief, 1 Firefighter/Paramedic/Field Training Officer (FTO), and 7 dedicated volunteers that respond to approx. 80 calls per year. The district provides structure and wildland fire response, rescue and vehicle extrication, and initial emergency medical response with an impeccable fleet of apparatus. CCFEMS works closely with CRFPD to provide emergency medical services, first response as well as structure and wildland fire backup. CCFEMS provides the initial response and CRFPD is the transport ambulance service. The fire district is 30 square miles and serves approx. 100 permanent residents and over of 100,000 annual visitors.

Facilities and Apparatus

CRFPD has two stations that house apparatus and equipment, and an administration building.

Our Main Station is located in the heart of Crescent and houses a Structure Engine, an Urban Interface Engine, and two ALS ambulances. Hackett Station is located approx. 9 miles north of Gilchrist and houses a Type 6 Wildland Engine, a Water Tender, and a Structure Engine.



CRFPD Administration Building

Our administration building is centrally located between the two stations and includes offices, training room, dorms, and living quarters for staff and volunteers. We also have two staff vehicles that are available to on duty personnel as needed.



CCFEMS Station

CCFEMS includes a main station that houses; apparatus, equipment, offices, and training facilities and new staff housing for the Field Training Officer and Student Residents. The station houses a Type 5 Wildland Engine, a Structure Engine, a Water Tender, a Non-Transport Ambulance, a Heavy Wildland Engine, and a MCI Trailer. The main station also has storage facilities, two large training rooms, a kitchen, and offices. The staff house includes a split living quarters for the FTO and living quarters for the student residents in the front of the housing complex. The station also includes a licensed 24/7 heliport.

Dual Resident Student Expectations

Applicants must be 18 years of age at start date into the program, must be enrolled at Central Oregon Community College in Structure Fire Science and/or Paramedicine, and must have a valid Oregon drivers license and have an insurable driving record.

As a Dual Resident Student with CRFPD and CCFEMS you will be immersed into a career firefighters' lifestyle, you will be assigned to a 48/96 shift schedule working alongside career staff and volunteers at both departments. During your 48 hour shift you will be expected to be at CRFPD while not attending classes at Central Oregon Community College (COCC). During your time at CRFPD you will be tasked helping with daily fire house



operations and chores. During your 48 hour shift you will also be responding to both fire and EMS emergency calls and in accordance with your certification level you will be tasked with operational duties on those scenes. Responding to these calls you will gain valuable hands-on training, first-in on structure fires, operate fire engines, or be lead on medical calls. Once you are trained you will also be asked to drive Districts apparatus. As part of the Dual Resident Student program you will also be expected to consider Central Cascades Fire and EMS your Primary Residence, this meaning that you spend 75% of the nights in one month at CCFEMS on your off days from CRFPD, you will be required to pull 120 hours per month of on duty time at CCFEMS in lieu of boarding and utility costs. During these 120 hours of on duty shift time, that are scheduled by the students, you will be expected to complete daily fire house tasks at CCFEMS as well as respond to calls when needed. A big part of a successful outcome in this program being involved and attending daily and weekly trainings that are hosted by CRFPD, CCEMS, and outside agencies. You will be expected to attend weekly trainings on Wednesday evenings and bi-monthly trainings on Saturday mornings. These trainings will be required unless you are attending classes at COCC during the scheduled time or are previously excused.

Although your studies will be the upmost priority while a part of the resident program are at CRFPD and CCFEMS. You will be attending Central Oregon Community College (COCC) full-time and studying to obtain your AAS in Structural Fire Science and/or as well as your AAS in Paramedicine. You will be expected to attend at least 12 credit hours each term in classes directly related to obtaining the above degree. CRFPD's student program is a two year program with the option to stay a third year, if needed, to complete Firefighter or Paramedic studies.

Academy Requirements

Dual Resident Students with CRFPD and CCEMS will be required to attend a 6-12 week Fire Academy during the Summer before their first fall term with the Districts. This Academy will

provide the initial skills and training necessary to be successful within the organizations and will begin your NFPA and DPSST certifications necessary for a successful career in the fire service.

Housing

During your time in the Resident Student Program when you are on duty at CRFPD you will be provided with an 8x10 dorm room in our Administration building in Gilchrist, equipped with a bed, desk, and storage cabinet. This dorm room will be shared between students in the program and will be used during your 48 hour shift. The administration building is also fully equipped with living quarters including a kitchen, day room with a TV, and a bathroom with a shower. An agreement with the Gilchrist High School provides CRFPD personnel with access to a full weight room and track at their facility. Internet is also available for use for studying.

You will also be provided with a permanent living quarters at CCFEMS where you will be provided with your own dorm room equipped with a bed, desk, and storage cabinet. This will be your dorm room that you will be living in off shift and while on duty at CCFEMS. You also have access to a full kitchen, two bathrooms with showers, and a day room with a TV. Internet is also available for use for studying.

Scholarship

If chosen by CRFPD and CCFEMS to be in the Dual Resident Student Program you will receive a scholarship. This scholarship will be \$5250 per year which equates to \$1750 per term that is attended at COCC and will only go towards approved classes and degree mentioned above and education related materials i.e. books. In order to offset fuel costs, of being in a rural location to COCC, you may be able to utilize a staff vehicle to drive to and from classes and training when necessary.



If you have any questions regarding CRFPD or would like to visit and take advantage of our ride along program, please contact FF/Paramedic Myrsideys Steward by phone **541-433-2466 or email steward@crescentrfpd.com.**