



Crescent Rural Fire Protection District

Resident Student Program

Goal

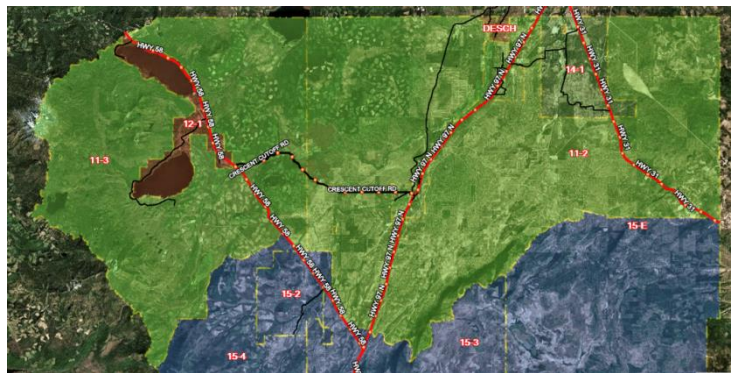
To gain experience and knowledge of Fire and Emergency Medical Service Incidents as well as Daily Operations. You will be working alongside experienced and knowledgeable mentors learning the principles of firefighting, fire prevention, rescue/extrication, and all aspects emergency medical services.

History

Gilchrist, home to our administration building, was established in 1937 to accommodate the Gilchrist Timber Company. It was started as a rural community that provided all the needs of the mill employees and their families to live and prosper including; housing, schools, and stores. The mill was established with a log pond on the west side of Highway 97 with grid-like housing and commercial buildings on the east side. Crescent Fire District was established in 1959 by a group of dedicated volunteers with the goal to provide Fire and EMS services to the communities of North Klamath County. CRFPD grew with the community to provide the services that it needed and in the early to mid-1990s became a combination department with the introduction of its first career staff.

The Organization

CRFPD is located approx. 45 miles south of Bend on Highway 97. Staffing consists of the Fire Chief, 2 Career Firefighter/Paramedics, and an Office Administrator/EMT-Advanced who all work alongside a group of 15 dedicated volunteers. CRFPD responds to approx. 550 calls per year. The district services include structure and wildland fires, rescue/vehicle extrications, and emergency medical incidents. Our fire district spans 13.4 square miles and we provide Advanced Life Support (ALS) Ambulance Service that covers 591 square miles serving approx. 2,000 residents year around. Our ambulance service includes the communities of Crescent, Gilchrist, Central Cascades (Crescent Lake) located on Highway 58, Oregon Outback Fire District located on Highway 31, and the South End of LaPine.



Green area and Brown area is CRFPD
Ambulance Service Area.

Facilities and Apparatus

CRFPD has two stations that house apparatus and essentials, and an administration building. Our Main Station is in the heart of Crescent and houses a Structure Engine, Urban Interface Engine, Light Brush Engine, and two ALS ambulances. The Hackett Station is located approximately 9 miles north of Gilchrist and houses an Antique Structure Engine, Water Tender, and Structure Engine.



CRFPD Administration Building

Our administration building is centrally located between the two stations and includes offices, training room, dorms/living quarters for staff and volunteers. Two staff vehicles are also located at Administration.

Resident Student Expectations

Applicants must be 18 years of age at the start of Fall Term, be enrolled at Central Oregon Community College in Structure Fire Science and/or Paramedic, possess a valid Oregon Drivers' License, and have a insurable driving record.

As a Resident Student with CRFPD you will be immediately placed into a career firefighters' lifestyle. You will be assigned to a 96/96-hour (4 days on/4 days off) shift schedule working alongside career staff and volunteers within the department. During your 96 hour shift you will be expected to be at CRFPD if not attending class at COCC. During your time at CRFPD you will be tasked with daily fire house/operational chores. Also, during your 96 hour shift you will be responding to both fire and EMS calls. If the situation warrants, you will be tasked with operational duties on scene in conjunction with your certification level. Getting the opportunity to experience an actual scene provides valuable hands-on training. You will also be trained to drive CRFPD apparatus.



As part of the Resident Student program, CRFPD will be required to be your Primary Residence. This means you must spend a minimum of 75% of the month at CRFPD. This requirement is in lieu of boarding and utility costs. Also, you may be off duty during that 75% requirement, but will be expected to respond to bigger incidents, second out calls, and cover your fellow students while they are attending classes at COCC.

A big part of a successful outcome in this program is being involved and attending daily and weekly trainings that are hosted by CRFPD and outside agencies. You will also be expected to attend weekly trainings on Wednesday evenings from 1800 hours to approximately 2000 hours. These trainings will be required unless you are attending classes at COCC during the scheduled



time or are previously excused. Your studies will be the upmost priority while being part of the resident program here at CRFPD. You will be attending COCC full-time and studying to obtain your AAS in Structural Fire Science and/or as well as your AAS in Paramedicine. You will be expected to attend at least 12 credit hours each term in classes directly related to obtaining the above degree. CRFPD's student program is a two-year program with the option to stay a third or fourth year, if needed, to complete Firefighter or Paramedic studies.

Academy Requirements

Resident Students with CRFPD will be required to attend a 6 to 12 week Fire Academy during the summer before their first fall term. This Academy will provide the initial skills and training necessary to be successful within the organization and will begin your NFPA and DPSST certifications necessary for a successful career in the fire service.

Housing

During your time in the CRFPD Resident Student Program you will be provided with an 8x10 dorm room in our Administration building in Gilchrist, equipped with a bed, desk, and storage cabinet. This dorm room will be solely yours during your time at CRFPD. The administration building is also fully equipped with living quarters including kitchen, day room with TV, and bathroom/shower. An agreement with the Gilchrist High School provides CRFPD personnel with access to a full weight room and track at their facility. WIFI Internet and a printer is also provided at CRFPD Administration Building and Main Station.

Scholarship

If chosen to be in the Resident Student Program you will receive a scholarship. This scholarship will be \$5250 per year. This equates to \$1750 per term that is attended at COCC and will only go towards approved classes, degrees mentioned above, and education related materials i.e. books. In order to offset the fuel costs associated with being in a rural location to COCC, you will be provided a fuel stipend to be able to offset costs associated to attending classes.



If you have any questions regarding CRFPD or would like to visit and take advantage of our ride along program, please contact FF/Paramedic Myrsideys Steward by phone **541-433-2466 or email steward@crestrfpd.com.**

