



**CENTRAL
OREGON
COMMUNITY
COLLEGE
FOUNDATION**

LEGACIES

Central Oregon Community College Foundation

Winter 2005

Gift grows by \$1 million

Planned giving provides win-win situation

Ray Shumway and Jacquie Bushong recently sold the remainder of their ranch in Powell Butte and added \$1 million to the \$600,000 Charitable Remainder Unitrust they established in 1999, which names the COCC Foundation as the future beneficiary of the trust. They explain their reasons for setting up this planned giving scenario:

Jacquie: We are creating a future gift to the scholarship program administered by the COCC Foundation that we hope will have a positive impact on the lives of many Central Oregonians.

Ray: We are publicly announcing this gift to the Foundation to let everyone know about this financial 'win-win' situation. We were able to eliminate the capital gains tax on the sale of this property, save on income taxes by using the charitable contribution deduction and have greatly increased our retirement income from the property.

Additionally, our parents valued education. My mother moved to Alfalfa when she was about school age. There was no money for her to continue her education so she deliberately flunked her 8th grade exam so that she could

(continued on page 2)

Grants Aid Basic Math Skills

US Bank and PacificCorp fund online math classes

Through the support of two grants, Central Oregon Community College has funded a program offering online developmental math classes.



photo by Andy Tullis

Ryan Killgore, region president, U.S. Bank, presents Eileen McLellan, COCC Foundation board chair, with a large donation to benefit online developmental math classes.

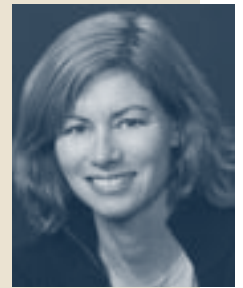
"The program benefits all students, but will be particularly helpful to low-income students and those returning to college after a long absence,"

said Carol Moorehead, associate dean of the
(continued on page 5)

The Hard Work of Changing Careers

Marsha Noone

"I never thought I'd be doing this," reflects Marsha Noone of her career switch. Once a model in Italy and Germany and later a partner in several modeling agencies in Capetown, South Africa, and Miami Beach, Marsha now cleanses wounds and administers EKGs.



Marsha Noone
COCC nursing student

"Miami Beach was superficial and stressful and not a good place to raise kids," she explains. "I wanted to work with people who really needed my help."

In 2001 she returned to her hometown of Bend where her mother lives and after two years of course work was accepted into the COCC nursing program. "I didn't want to take a chance on the lottery, so I worked very hard to maintain a 4.0 average."

"It's much more scientific than I thought," she says. "It takes critical thinking to put all the pieces

(continued on page 6)

What's Inside

Message from Dr. Middleton	2
Madras Campus Progress	3
Ways to Give	4
The Learning Equation	5
Crown Pacific Scholars	6
COCC Forestry Program	7
Donors and Memorials	8-11
Coming Events	12

Foundation Marks 50 Years of Helping

from the President

This will be an exciting year for Central Oregon Community College and especially for the COCC Foundation. While we are challenged by the financial realities of the state budget, I am excited by the new directions we are exploring, the enhanced partnerships we are developing and all the promise the new year holds.

For the Foundation, 2005 marks the 50th anniversary. We are pleased to acknowledge the long-standing history of the oldest community college foundation in the state of Oregon, as well as one of the oldest in the country. Also, in March we will celebrate the 30th anniversary of an exceptional event – the Meal of the Year. I understand that this is one of the premier gatherings in all of Central Oregon

and is a tremendously successful fundraiser for the Foundation.

Beginning in 1955 with a \$500 gift to make loans available to needy students, the COCC Foundation has provided support to the College and our student body throughout its history. Never has that support been as important as it is today. As we face decreased revenue from the state, we increasingly rely on the Foundation to help our students achieve their goals and to help the College fund programs and services.

As I said when I began my duties here last summer, the difference between a good college and a great college can be leveraged by a committed college foundation. With such a strong history, and with the commitment

exhibited by this year's Foundation Board of Directors, I am confident we are — and will continue to be — a great college.



Dr. James Middleton
COCC President

I have spent much of my time during the last six months meeting and talking with many of you. I have been impressed by the strong support for the College. I am challenged by the desire to make more programs and services available throughout the District. I look forward to working with you in this new year as we strive to fulfill our commitment as this community's college.

(continued from front page)

Trust Gift a Fitting Tribute to Parents' Values

Central Oregonians tell of family's quest for educational opportunities

attend school for one more year. She was determined that her children would continue their schooling.

My father was the eldest of 10 children and the family lived south of Juntura. He attended the Intermountain Institute, which turned out to be a "school" that utilized students for farm labor. After WWI he settled in Powell Butte and worked as a sheep rancher.

Jacquie: My mother married during her sophomore year at Linfield College and had to quit because married students were not allowed. Years later she earned a two-year provisional teaching

certificate, then a bachelor's degree and finally a master's degree from the University of Oregon. She expected that all her children would go to college.

Ray: I earned a bachelor's degree in business from Oregon State—with a hiatus while I served in the Army during the Korean conflict—and then returned to Powell Butte and started a beef cattle operation. My sister also graduated from OSU and my foster brother attended for one year.

Jacquie: Like my mother, I dropped out of college to get married. After a divorce, I attended UO while work-

ing part time and raising two children. Then I earned a law degree and a certificate in gerontology.

Ray: We both advocate education because it gives you options. Without options, you have little control over your life.

Jacquie: And we are both advocates of community colleges. They are a good transition for many students.

Ray: We feel that through this trust, everyone wins. And it is also a fitting tribute to our parents' values.

New Madras Campus Possible with Land Donated by Bean Foundation

Bean Foundation has improved quality of life for area youth since 1981

Although Louis 'Al' Bean and his wife, Velva, didn't have children, they were troubled by the lack of recreational and educational opportunities for the young people of Madras. To help alleviate the problem, they established a foundation in 1981 that was charged with a mission to work with public partners to develop the quality of life for area youth.



The proposed Madras Campus will serve students and the work force in the northern part of the COCC District, a top priority of the COCC Board of Directors.

The foundation has donated land to city and county parks, an early childhood center, Jefferson County Middle School, Central Oregon Community College and the recently approved aquatic center. The foundation has also donated funds to youth-oriented projects; recently the skateboard park fund received \$20,000 from the foundation.

"Al Bean passionately believed in the spirit of cooperation, and the foundation works hard to further the dreams of a very generous man."

"Al was a staunch Republican," says Don Reeder, counsel for the foundation. "He wanted to see private enterprise forming partnerships with public entities to get things done."

"He had strong views and expressed them candidly," remembers George Neilson, chair of the Bean Foundation. "He passionately believed in the spirit of cooperation, and the foundation works hard to further the dreams of a very generous man."

Bean acquired about 500 acres in the Madras area, some of which he purchased in the 1940s for \$5 to \$10 per acre. He served with the Navy Seabees during World War II and sustained serious injuries. After the war, he worked as a farmer, justice of the peace, insurance agent and real estate developer. He died in 1988 at age 77.

Madras Campus Update

Pres. Bush approves funding

President George W. Bush has signed the 2005 Veterans, Housing and Urban Development Appropriations bill legislation that – among other projects – allocates \$200,000 toward construction of the COCC Madras Campus. The money will be given to the Bean Foundation of Madras, a nonprofit organization that has donated 47 acres for the development of the new campus.

"The development of a campus in Madras to serve students and the work force in the northern part of the COCC District is one of the top priorities of our board of directors," says COCC President James Middleton. "This brings us one step closer to that goal."

George Neilson, chair of the Bean Foundation Board of Directors, commented: "We believe the branch campus will strengthen the communities in the northern part of the COCC District by offering educational opportunities to its citizens and youth that have been previously unavailable. This campus will provide a gateway to healthier communities."

The Bean Foundation donated the land to COCC three years ago with the condition that the college construct the first building by 2006.

COCC officials are working with federal, state and local individuals and organizations to secure funding for construction of the facility. The award is part of the FY 2005 Veterans, Housing and Urban Development Appropriations bill and among several projects in Oregon.

Fifty Years of Giving to COCC

This year marks the 50th anniversary of the Central Oregon Community College Foundation, and so it is appropriate to celebrate the historical and continuing generosity of Central Oregonians toward COCC.

The endowments at the Foundation are growing. In addition to the recent \$100,000 nursing scholarship endowment which was highlighted in a previous "Legacies" newsletter, three couples have added \$10,000 to their endowments, and another endowment received a new \$50,000 investment. Also, we have news of an estate plan that calls for a \$350,000 endowment.

Meal of the Year support increased last year by 54 percent, to a total of \$185,000; our annual scholarship gifts exceeded \$230,000; and the financial support of the Nancy R. Chandler

Visiting Scholar Program increased dramatically. In total, gifts to the Foundation rose by 32 percent.

As I reflect on this impressive generosity from our community, I think of William James who said, "The best use of life is to spend it for something that outlasts life." These gifts outlast life because the results of education are never-ending. Through education, one's ability to reason and problem solve becomes broader and deeper; one's view of the world becomes more expansive; and one's participation in society becomes more significant.

Gifts to education outlast life in the same way that the scholarship my father received outlasted the giver's life. Because of that scholarship, my father was able to go to college. Later the GI bill allowed him to go to medical

school. All of my siblings have successful careers, including one of my brothers who teaches here in Central Oregon and two brothers who practice medicine (one as a physician and one as a nurse practitioner).



*Jim Weaver
Executive Director
COCC Foundation*

Gifts to education outlast life. Be it a scholarship, endowments to support the COCC library, an endowed chair or gifts to other important programs on campus, your gift outlasts life. Thank you to all who gave. Thank you to all who are taking the time to learn more about the college.

Planning the Gifts that Outlast Life

Create your own win-win situation with these ideas

The new year is a wonderful time to celebrate family, celebrate values and celebrate what we care about. One way of doing so, when it comes to those charities we care about, is to consider the various types of gifts one can give. Here are a variety of options:

Current Gifts

The most common way to make an immediate gift is by writing a check. This type of cash gift provides immediate liquidity for charity and generates a charitable income tax deduction for the donor in the year of the gift.

Giving stocks or bonds may provide greater tax benefits. If you have owned securities for more than one year and the fair market value has increased since you purchased them, you can avoid capital gains tax and receive a charitable income tax deduction equal to the fair market value.

A gift of real estate that has been held for more than a year also has the advantage of providing you with a charitable deduction based on the current fair market value, as well as bypassing capital gains tax on the appreciation.

Planned Gifts

Sometimes called deferred gifts, the term planned gifts refers to specific strategies that (in most cases) benefit charity at some point in the future while offering immediate benefits to the donor.

The gift of a paid-up life insurance policy is a good example. By designating a qualified charity as owner and beneficiary of such a policy, you will receive a charitable income tax deduction that, in most cases, is equal to your cost basis in the policy.

Gifts that Generate Income for You

The benefits of planning compound when you utilize one of a number of strategies that generate income as well as provide a number of other attractive benefits.

The Gift Annuity is a great example of how a gift generates income for the donor. This is actually a contract between a donor and a charity that is part gift and part annuity. In addition to the annuity payment, the donor receives a charitable income tax deduction and a portion of each annuity payment may be tax free.

The Deferred Payment Gift Annuity, in which annuity payments are delayed for a number of years, offers rates that make it an attractive supplement to retirement income.

The Charitable Remainder Trust is perhaps the most versatile charitable giving

(continued on page 6)

Online Math Students Sum It Up

For many COCC students, one-on-one tutoring leads to success in math



Student April Wilson enjoys her online math class with the tutoring of Patricia Hammer, a COCC online assistant.

Bruce Stephens: “Mainly I liked the ability to work at my own pace—to be able to go back and go over items I didn’t understand. One of the biggest reasons I was successful was the tutoring here in Redmond.”

Norma Leistiko: “This is my third online class. I focus and learn better when no one is paying attention to me. That is the big appeal to online learning for me. I just feel I get so much more by puzzling it out myself. Of course I have lots of help in person if I want it—tutors in the CAP Center or my teacher will send me an e-mail if I am really lost.”

Lance Queen: “I recently re-entered college after a 15-year gap. The advantage I have found with online math is the convenience of studying at your own pace. My goal is to earn an associate’s degree in computer and information systems.”

(continued from front page)

Grants Provide for Developmental Math Program Online

Online classes help students bring math skills up to college level

Redmond Campus and Continuing Education, who initiated the project. “It has the potential to save students both time and money as they refresh their math skills and qualify for college-level course work.”

With grants of \$25,000 from US Bank and \$2,500 from PacifiCorp, two COCC associate professors of mathematics—Charlie Naffziger and Doug Nelson—worked with an online program called The Learning Equation, TLE, to develop course work that aligns with COCC’s existing math curriculum. The grants help to reduce the costs of the texts as well as pay for the online tutors that COCC has hired.

“TLE’s instruction is robust and thorough,” said Naffziger. “The lessons plant the seeds of more advanced concepts and if students interact with all the material, they will know the concepts very well.”

Currently nearly 93 percent of prospective students who take the required math placement test find that they need remedial math instruction before they are prepared to enter a college-level math class. Taking the five developmental math classes can take up to two years, delaying progress through college-level course work and costing hundreds of dollars in tuition and fees. The online program gives these students some flexibility in when and where they take these classes.

The goal is to eventually operate the program without the constraints of COCC’s term schedules. “In theory, a student could complete Math 20 in a couple weeks, and then move on to Math 60,” said Nelson. “This would allow the greatest efficiency of students’ time and money.”

Using TLE software, student’s access self-paced developmental math

training in a computer lab setting or at home. Each lesson has six components that end with an assessment, and the program e-mails the scores to the instructors. Students can get help through the Redmond Campus tutoring lab, Bend Campus tutoring lab, phone calls, e-mail, Naffziger and Nelson’s office hours and the program’s online tutoring component. Before any student is allowed to register for an online math course, they must complete a mandatory orientation to make sure each student is realistic about the high level of self-motivation required to be successful in this format.

Initially, enrollment in the online math courses was limited to 30 students. During the next two terms, 85 to 90 students were enrolled. The success rate so far has been closely aligned with the traditional classroom math courses.

(continued from front page)

Nursing Student

Still manages to volunteer

of information together. I think people take for granted how knowledgeable nurses are.”

Marsha’s grueling schedule continues with 12-hour night shifts as an emergency room technician several days per week while carrying a full load of classes and time-intensive clinical class work at the hospital. She also volunteers at her children’s school and tutors other COCC students.

Scholarships from COCC Foundation and the Daughters of the American Revolution defray tuition costs and her mother helps with supervising her two children.

“Working nights was the best solution to spending more time with my kids,” says Marsha. “My mother has been super supportive. I couldn’t be doing this without her.”

Marsha passed her licensed practical nursing exams last summer and will earn her associate’s degree in nursing this spring. Then it’s on to Oregon Health Sciences University.

“My goals for the moment are clear: to earn a four-year nursing degree and to be an awesome mom for my children.”

(continued from page 4)

The Many Ways of Giving the Gift of Education

tool. With the CRT, it is possible to bypass capital gains tax on the sale of highly appreciated assets, generate an increase in income, receive an attractive charitable income tax deduction, and fulfill your philanthropic objectives. The CRT is a legal trust that can be constructed to produce a predictable annuity payment each year or take advantage of investment growth opportunities with income payments based on growing trust principal.

Crown Pacific Scholarship Recipients

Kristy Knoke

Kristy Knoke grew up in Bend taking full advantage of the outdoor recreation opportunities. After graduating from Mountain View High School in 1991, she started taking general education classes at the college, unsure of her career path. While taking a dendrology class (identifying plants), the instructor encouraged Kristy to try other forestry classes.



Kristy Knoke

“I like being outside, so this kind of career appealed to me.”

“I like being outside,” she says, “so this kind of career appealed to me.”

A summer working as a member of a timber-marking crew solidified her plans.

“The classes are pretty tough,” she says of her courses, “but since there are only seven students in two of my classes, there’s lots of opportunity for one-on-one instruction.”

After earning her associate’s degree in forest resource technology next spring, she plans to enroll at the University of Idaho or Oregon State University in the fall.



Jim Holmly

Jim Holmly

North Dakota born and grown, Jim Holmly went looking for a good forestry program and found what he was looking for at COCC.

“The faculty is easy to work with,” says Jim. “Ron (Boldenow) is always willing to help and encourages us. And he knows so much.”

“It’s very challenging, and I find that I like school now.”

Originally, Jim set his sights on a two-year degree in forest resources technology. But his experience at COCC has changed his mind; he now plans to earn a four-year degree in natural resources.

“When I started the program, I thought I knew what it was about,” he says. “There’s so much to learn about logging regulations and long-term management of the forests. It’s very challenging, and I find that I like school now.”

Ron Boldenow: "What Is a UTM grid?"*

Professor makes learning a game



Field experience brings together the understanding of math and science skills and concepts.

To help his students review at the end of each course, Ron Boldenow plays a Jeopardy-style game with likely exam questions in a variety of categories.

"Every student pays close attention to the questions and answers, and they claim it is a great review strategy," explains Boldenow, assistant professor and department chair of Central Oregon Community College's forest resources technology program.

Forest technology, an applied science, requires students to spend a good deal of time in labs developing skills.

"Often students tell us that after completing a lab they now understand the importance

and application of a mathematical or scientific concept," says Boldenow. Observing these "light-bulb moments"—when students understand the importance and application of a mathematical or scientific concept in the field or lab—is the best part of teaching for him.

Boldenow taught at Humboldt State University and College of the Redwoods before joining the faculty of COCC in 1999. He earned a bachelor's degree in biology, a master's degree in forestry and a doctorate degree in wildland resource science.

* Universal Transverse Mercator grid divides the world into 60 north-south zones.

COCC's Forestry Program

Reputation for quality students

"We get great feedback from employers and universities," says Ron Boldenow, assistant professor and department chair of COCC's forest resources technology program. "We have an excellent reputation for turning out a quality student."

Students completing the two-year associate's degree in forest resources technology are qualified for jobs as field technicians and firefighting with contractors, consultants, private companies as well as county, state and federal agencies.

The average hourly wage for a forest technician in Oregon is about \$19; wages range from about \$12 to \$26 per hour. Most students start working seasonally and then transition to full-time, year-around jobs. About a quarter of the students pursue a four-year degree.

The program, one of the College's oldest, dates to the late 1950s. There is no enrollment limit. When classes fill, classroom locations are changed and lab sections are added. In the last 10 years, 74 students have earned associate's degrees in forest resources technology. The program is recognized and approved by the Society of American Foresters.

Dear Friends at Central Oregon
Community College Foundation:

(Please complete and return this reply form)

Please contact me about a
personal visit. The best time to
call me is: _____

Name: _____

Address: _____

Please note the enclosed donation.

City: _____

I have provided for Central
Oregon Community College
Foundation in my will or other
estate-planning document.

State: _____ Zip: _____ Phone: _____

I am interested in volunteer
opportunities with the
COCC Foundation.

Please mail this form to:

Central Oregon Community College Foundation
2600 NW College Way, Bend, Oregon 97701

Donors Investing in Community

A listing of those who make education accessible

The individuals and organizations listed in this report have made a sound investment in their community. Each name represents a contribution to the Central Oregon Community College Foundation, received from July 1, 2003, through June 30, 2004. We have strived to ensure the accuracy of this list. If you notice any omissions or inaccuracies, please bring them to our attention by calling the Foundation at (541) 383-7225.

A Bandon Inn	Margaret Bassett and Jon Anderson	Boomtown Records & Tapes	Cascade Gardens	Compass Commercial
A Clean Impression	Troy Batchelor	Mac and Nancy Bosch	Cascade Office Equipment, Inc.	The Compleat Bed & Breakfast
Abby's Legendary Pizza	Don and Shannon Bauhofer	Dave and Deborah Bourke	Cascades Academy	Marigale Compton and Doug Keeler
Patricia Abrahams	Beauty From the Inside Out	Michael Bourke	John and Joan Casey	Bud and Shirley Conard
Betsy Acarregui	Mary Becker	Robert and Marjorie Bourke	Peter and Liz Casey	Conklin's Guest House
Chris Adams	Bedouin	Janice Bowers	Jodi L. Cashman	Kellie Cook
Mike Addington	Gary and Rhonda Bell	Matthew and Annette Bowler	Leigh and William Casler	Bob and Beverly Cooper
Jeffrey and Beverly Adler	Ben & Jerry's Scoop Shop	Rebecca Bozarth	Terry and Ann Cedar	Scott and Laura Cooper
Cora Agatucci	Bend Brewing Company	BP Matching Funds Programs	Central Electric Cooperative, Inc.	Stan and Mary Cope
Mike and Tara Ahern	Bend Cabinet and Fixtures, Inc.	Dana and Nancy Bratton	Central Oregon Classic Chevy Club	Jerry and Michelle Cordova
Akasha Massage	Bend Chamber of Commerce	Renee Brazeau-Asher and Michael Asher	Central Oregon Outdoors	Cork
Alder Creek Ranch	Bend Education Association	Bob and Joyce Breadon	Central Oregon Radiology Associates	Shane and Jodi Correa
John and Janice Allen	Bend Fire Department	Bill and Jennifer Brewer	Central Oregon Retired Educators	Costco Wholesale
Alpenglow Cafe	Bend Garbage and Recycling	The Broadside	Century Cycles	Country to Class Floral Design & Gift Baskets
Alpine Glass	Bend Golf & Country Club	Marta Brockman	Century Insurance Group, LLC	Coyote Creek Cafe & Lounge
Amalfi's	Bend Memorial Clinic	Celeste Brody and John Holmberg	CertTracker, Inc.	Creative Beginnings
An Affair to Remember	Bend Pet Express	Rob and Kristin Brooks	Chuck and Kathy Chackel	Crooked River Ranch Club
Chuck and Sandy Anderson	Bend Research	Brooks Resources Corporation	Fred Chaimson and Carole Nuckton	T.W. and Cindy Crowder
Lynn Anderson	Bend Wireless	Dan and Mary Brown	Robert and Jeanette Chamberlain	Jim and Judi Crowell
Sydne Anderson	BendBroadband	Mary and Neil Bryant	Bob and Yvette Chandler	Greg and Peggy Cushman
Bill and Tina Anderson	Bendistillery, Inc.	Ron and Wilda Bryant	David and Debbie Chaney	Matt and Lisa Cutter
Sharla and Todd Andresen	Steve and Kitty Bennett	Bill and Paula Buchanan	Chavez Clayworks	D. A. Davidson and Co.
Erik Andrews	John and Patricia Bentley	Bill Buck	Chefs to Go	Nigel Dabby
Paul Andrews	Francie Berezo	Eric and Kathy Buckles	Cheryl Parton Photography	David Evans & Associates
Steve and Linda Andrus	Jim and Joanne Bergmann	Knute and Pat Buehler	China Wok	Jon Davidson and Ruth Herbert
Anglin Custom Portraits	Ed and Sandy Bigler	The Bulletin	Megan Ching	Deborah Davies
Apollo Tanning	Marian Biscay	The Bungalow Company	Gina Chylak	Bill and Judy Davis
Appetite Deli	Bruce and Jodie Bischof	Roxanne Burger-Wilson	CIDA	Jim and Dee Davis
The Ark Animal Clinic	Alice Bishop	Ruth Burleigh	Bill and Cindy Claridge	Richard and Sheila Dawson
Art Passions	Bits and Pieces	Margot Bushong	Noreen Clark	Matt and Lesley Day
Aspen Lakes Golf Course	Black and White Couture	Steve and Kari Byrd	Sandra Clarke	James and Lisa Dehart
At The Beach	Black Butte Ranch	Cafe Brasil	James and Nancy Claypool	Jay and Mary Lou DeLaney
Athletic Club of Bend	Gordon and Roz Black	Cafe Rosemary	Norma Cleveland	Mike and Barbara Delvin
Ken Atwell and Sandi Mootry	Jennifer and Mike Blair	Cafe Sintra	Clint Brooks General Contractor	Demetri's Greek American Cusina
Avenida Art & Frame	Marc Blank and Cezanne Hitchcock	Tim and Cara Caine	COCC Continuing Education	Denfeld Paints of Bend
Avion Water Co. Inc.	Wendy Bliesner	The Cake Lady	COCC Delta Epsilon Chi	Deschutes Brewery
Awbrey Dental Group	Lisa and Daniel Bloyer	Cakes by Marcia	COCC Faculty Forum	Deschutes Co Sheriff's Posse
Awbrey Glen Golf Course	Blue Spruce Pottery, Inc.	Stephen and Johnita Callan	Cog Wild	Deschutes County Ballroom Dance Club
Baby Phases	The Blue Teal Clothing Co.	Lyle and Patricia Calvert	Bob and Wanda Coil	Deschutes County Public Library
Babysitters on Call	Bob Thomas Chev/Cad/Honda/	Frank and Jane Cammack	Paul and Carrie Coil	Deschutes Mortgage Group
Margaret Bailey	Bob's Jobs	Can Chasers Classic	Coleman Vineyard	Deschutes River Trouthouse
Larry and Rachel Baker	Jeannette Bobst	Judy Candee	College Housing Northwest	Deschutes Window & Door Co.
Ball Janik LLC	The Body Shop	Candelight Dinner Cabaret	Columbia River Bank	Desert Country Nannies
Balloons R Us	Jeff Boggess	Peter and Patti Carlson	Combined Communications	Design of the Times
John and Cherry Bancroft	Andrew Boller	Dick and Mary Carlson	Community Foundation of the Great River Bend	DeWilde Art Glass & Design
Baney Corporation	Andrew Boller	Kit and Sandi Carmiencke		Di Lusso Baking
Curt and Robin Baney	Beth Bolles	Lonna and Jim Carnahan		Dieci Soli
Kevin and Tammy Baney	Bon Macy's	Carrera Motors, Inc.		
Bank of the Cascades	Emily Bonavia	Cascade Cleaners		
Joe Bankofier and Robin White	The Book Barn	Cascade Festival of Music		
Bob Barber and Wendy Howard				
Bare Elegance				

Donors

Judy Diliberto
Dimensions Consulting LLC
The Dolores Furtado Martin
Foundation
Domino's Pizza
Mike and Tara Donaca
Scott and Danielle Donnell
Donner Flower Shop
Ed and Mary Donohue
Stacey Donohue and Michael
Van Meter
Double F Nursery
Bob Douglass
Bill Douglass
Barbara Doust
Beverly Downer
Doug and Amy Downer
Julie and John Downing
Dr. Carl Ryan and Associates
Jerry and Connie Druliner
Barney and Rosanna Duberow
Bill DuBois
Duck Pond Cellars
Paul and Lydia Dudley
Ronni and Bill Duff
Mike Dugan and Judy Stiegler
Bruce and Kristi Dunlap
Earl Clausen & Friends
Sara Easley
East Cascade Emergency
Medical Services
Eastlake Picture Framing
Eberhard Dairy Products
Mark and Brenda Eberle
Paul and Kathie Eckman
Eco-Scapes
Eddie's Canton
Lynn Edwards
Tim and Jennifer Edwards
Garth Eliason
Mark and Pam Elmore
Embarcadero Resort Hotel
Bruce and Dawn Emerson
Steve Emery and Michele
Emery
David Erickson and Maren
Roach
Erickson's Sentry Market
Ernesto's Italian Restaurant
Wayne and Shirley Eshelman
Gary Everett and Joan
Steelhammer
Express Personnel Service
Extreme Business Consultants
Extreme Stretch Limousines
Eye of the Needle
Fabulous Hair
Jay Fain and Christine
Schroeder-Fain

Curtis and Nancy Faulkner
Lena Fava
Ron and Sandra Federspiel
Ted and Nancy Fehrenbacher
Craig Fetting
John and Mimi Fetting
Figaro's Pizza
Bud and Jean Fincham
Fingers 'n Toes
Cath Finney and Judy Jorget
Karen Finney
Fireside Spa & Patio
First Presbyterian Church of
Bend
First Response Medical Training
& Sales
Ed Fischer
Ron and Molly Foerster
Food Services of America
David and Kitri Ford
Stephen and Marsha Ford
Neal and Clarice Forester
Steve and Kim Forrester
Tom and Sally Foster
Charles and Amy Fraley
Frame Design & Sunbird
Gallery
The Fresh Pallet
Chris and Yvonne Fuller
John and Laura Furgurson
Pat Gainsforth
Gregory and Jane Garrick
Bob Garza
Gas Transmission Northwest
Corporation
GCC Bend LLC
Beth Gebstadt
Georgia-Pacific Corp.
GI Ranch Corporation
Sybil Gibson
Benjie and Dede Gilchrist
Diana and Warren Glenn
Goody's Ice Cream Store &
Soda Fountain
Julie Goulat
Dick and Merrily Graber
Donald and Marlene Grant
Grayhawk Grill
The Great Frame Up
Jenny and Tim Green
Greenery Accents
Bob and Fran Greenlee
Steve and Stephanie Greer
Steve and Cindy Greer
Greg Ginsburg, DMD
John Gregory
Margie Gregory
Jeff and Marna Griffin
Bob and Kathy Grim

Caryl Gunson
Bud and Peg Gunterman
Michael and Michelle Gwinup
Gypsy Rose Manor
Marie and Glen Hackbarth
Viki Haertel
Robert and Caro Hakala
Holly Hamilton
Michele Hammerquist
Barbara and Sam Handelman
Christy and Clint Handschuch
Pat and Cheri Hanna
Hans Restaurant
Deanna and Darrel Hansen
Gunnar and Lori Hansen
Mary Hansen
Todd and Marie Hansen
Hardwood Industries of Bend
James and Evonne Hargis
Bambi Hargreaves
Mike and Deb Harris
Pat and Bill Hassey
Bob and Deanne Hatch
ShanRae Hawkins
Heartstone Family Chiropractic
Franz and Cheri Lee Helfenstein
Dan and Mary Heller
Phil Henderson
Ron and Annette Henderson
Hen's Tooth
Lydia Hernandez
Stuart and Christy Hicks
Carol and David Higginbotham
High Desert Acupuncture Clinic
High Desert Beverage Dist Inc.
The High Desert Museum
High Desert Porsche Club
Tim and Judy Hill
Alan Hilles
Joan and Jim Hinds
Richard and Carolyn Hofstetter
Katherine and Ken Holden
Mike and Sue Hollern
Sue Holter
Michael and Sarah Holtzclaw
Margaret Honeyman
Dave and Julie Hood
William Hoppe
Tina and Nathan Hovekamp
Howard Cross Foundation
Emily Howard
Kate and Wilbur Huck
Neal and Jodie Hueske
Humane Society of Central
Oregon
Lorie Hunter
Robert Hurst
Yvonne Huson-Boni and Hank
Boni

Neal and Linda Huston
Impressive Events
INCLIMB Rock Gym
Integrated Eyecare
Inviting Designs Inc.
Loren and Sally Irving
Sara Iverson
Izzy's Pizza Restaurant
J Bar J Boys Ranch, Inc.
Jackalope Grill
Bill and Esther Jackson
Jamba Juice
Dinah James
John and Nancy James
Jay and Alyce Jantzen
Japanese Garden Society of OR
Jazzercise, Dendree Middleton
Jeld-Wen Foundation
Jill's Wild Tasteful Women &
Friends
Joe's Trailers
Suzanne and Gregory
Johanssen
Kirk and Judi Johansen
Eddie Johnson
Becky Johnson
Ken and Marj Johnson
George and Carolyn Jolokai
Jim and Laurel Jones
Casey and Kim Jones
Judge CC Chavelle Foundation
Frank and Julie Jungers
Juniper Golf Club
Just Used Cars
Kah-Nee-Ta Resort
Cynthia Kane
Marilyn and Dennis Karnopp
Karnopp, Petersen, LLP
Ka'va
Keck, W. M. Foundation
Greer and Janice Kelly
Jeremy Kelly
Kemco Truck & Trailer Inc.
Mrs. Bruce Kemp
Caryl Kempfer
Kelvin Kempfer
Ken's Ice
Jerry and Ann Kerr
John Keusterer
Kevin W. Clore Education
Foundation
Jacelyn Keys
Reginald Keys
Kialoa Canoe Paddles
Ryan and Chris Killgore
Daphne Killian
Ray and Lita Kilpatrick
Kirby Nagelhout Construction
Diane Kirk

Kitchen Complements
Tim Knopp
Len and Kay Knott
Jeff Knox
Rachel Knox
Thomas and Bonnie Koenig
Gary Kontich
Kit and Marjo Korish
Marla Koslin
Mike and Alison Kozak
Dave and Jennifer Kremers
Jim and Jane Kress
Richard and Loretta Kriege
Dianne and Nils Kristiansen
Mary Jeanne Kuhar
KVC Mechanical
La Paw Animal Hospital PC
La Pine Ace Hardware &
Building Supply
Amy Lafferty
Alicia Laffer
Lowell and Ruth Lamberton
Travis Langley and Susan
Loomis
Lark Gardens
Larson Carpet Care
Laser Medical Skin Center
Monzell Lauke
Gary and Sherry Laursen
Paul and Gail Laursen
Dale and Margaret Lawrence
Bill and Nancy Laws
La-z-boy Furniture Galleries
Jim and Carol Leach
Connie Lee and Kirt
McAlexander
Dorothy Leman and Rebecca
Plassmann
Leslie A. Sundet, CPA
LibertyBank
Linens N' Things
Lilli Ann Linford-Foreman and
Terry Foreman
Ralph and Janet Litchfield
The Lodge at Suttle Lake
Susan Logan-Weathers
Linda Louk
Kathleen and Doug Lowe
Katherine Lucas
Greg Lyons
M C Smith Sign Company
Anne MacDonald
Brian MacDonald
Denise and Jim Mahoney
Mail Boxes Etc.
Barb Malcom
The Mandala Agency
Mangial Pasta!
Steve and Melanie Mangin



CENTRAL
OREGON
COMMUNITY
COLLEGE
FOUNDATION

LEGACIES

Central Oregon Community College Foundation

Donors

Chris Mansfield
Doug Maragas
Maragas Winery
Virginia Mason
Ken and Jacque Mays
Mazama Capital Management, Inc.
Troy and Merrilee McCabe
Crystal McCage
Susan and William McCampbell
Judy and Jay McCaul
McCauley's Truck Repair
Gregory and Carter McClarren
Dorothy McCool
Fran McCormick
Jill and Daniel McCormick
Jack and Barbara McCown
Matt and Renee McCoy
Marcia McCullough
Tim and Martha McGinnis
McGrath's Fish House
Patricia McGuinnis
Betty and Mike McKee
Jeff and Theresa McKinney
Eileen and Bruce McLellan
McMenamins Pubs and Breweries
Mike and Bobbie McNeil
Gary Meddaugh
Angela Melton
Mercury Diner
Merenda Restaurant & Wine Bar
Barb and Terry Mero
Aimee and Tate Metcalf
DeAnna Metcalf
Peter Meyer
Mid Oregon Federal Credit Union
Kate and Andrew Miles
Mill Inn Bed and Breakfast
Charlie and Laurie Miller
Connie Miller
Miller Lumber Company
Mingle
Mini Pet Mart
Mission Uniform & Linen Services
Mongolian BBQ
Alicia and Bob Moore
Craig and Linda Moore
James and Shawna Moore
Carol and Rod Moorehead
Peter and Virginia Morbeck
Morgan Stanley
John Morrissey
Jane Morrow
Julie Mosier

Patti and Greg Moss
JD Moulds
Mount Bachelor Village
Mountain View Winery
Mt. Bachelor, Inc.
Gregg and Barbara Munster
Jackie and Glenn Murphy
Robbin Murray
Charlie and Cindy Naffziger
Herb and Laura Nash
Natural Rock & Landscape Supply
Laurie Neil
Nelsen Tire Factory
Doug Nelson
Scott Nelson
New York Life Foundation
Newport Avenue Market
Niblick & Greene's
Peggy Nideffer
James Northrop
Keena and Robert Northrop
Norwalk - The Furniture Idea
Nosler, Inc.
Carole Nuckton and Fred Chaimson
Oasis Spa
Steve O'Brien
Oil Can Henry's
Olde Towne Pizza Company
Virginia Olea and Ronald Torres
Michael and Gloria Olin
Dave and Ilene Olsen
Bob and Gail Olsen
Patricia O'Neill and Dick Koning
Oregon Coast Aquarium
The Oregon Community Foundation
Oregon Museum of Science and Industry
Oregon Public Broadcasting
Oregon State Society
Daughters of the American Revolution
Oregon Symphony
Oregon Turf & Tree Farms
Orion Greens
Harry and Ietje Orr
Lori and Joseph Ortiz
OSU Cascades Campus
Christine Ott-Hopkins
Overbay Development
John and Yvonne Overbay
Pacific Rim Bancorp, Inc.
PacifiCorp Foundation
Painted Pony Trading Company
Nathaniel and Lucinda Palmer
Papa's Pizza

Paper Jazz
The Paper Place
Ron and Judy Paradis
David Pardo
Glenn Parker
Parr Lumber
Rich and Sharon Parr
Paulina Hoo Hoo Club 220
Sara Paulson
Ed and Maryanne Payne
Woody and Fran Peeples
Pelican Bay Forest Products
Mark and Sheri Pendergraft
Sarah Pengilly
PEO-AI Sisterhood
Pepsi Bottling Co.
Performance Insights
Margaret Peterson
Don Petrбок
Pfundamentals
Mona Phillips
Phoenix Inn
Brynn and Ben Pierce
Laura and John Pinckney
Pine Mountain Sports
The Pine Tavern
Pizza Hut
Pizza Mondo
Rebecca Plassmann and Dorothy Leman
Carolyn Platt
Bruce and Julie Plummer
Prairie Chic
Deak and Barbara Preble
PRG Property Management, Inc.
Pronghorn
Helen and Maurice Pruitt
Mary Lou Purcell
Rich and Kristen Pyzik
Quail Run Golf Course
Quality Clean
Ron and Loretta Quant
Margaret Quintong
Justen Rainey
Shirley Ray
Dan and Terry Re
Marlene and Garry Ream
Red Carpet Car Wash
Red Robin of Bend
Curtis and Larissa Ree
Jeff and Sheila Reed
Don and Cindy Reeder
Kris Rees
Regal Cinemas
John and Betty Reid
Mark Reinecke
Jane Reynolds
Kim Reynolds

Kurt and Holly Reynolds
Paul and Ann Reynolds
John Rhetts
Jon and Pauline Rhoads
Charlie Rice
Barbara Rich
William and Beverly Riddle
Mahea and Robert Riley
Tom and Laury Riley
Raymond and Gale Rivera
The Riverhouse
River's Edge Golf Course
RK Advertising & Promotions
Stanley and Janice Roach
Robberson Ford Sales, Inc.
Janine and Gordy Robberson
Jeff and Margi Robberson
Robby J's Bistro at Mill Point
Roberto's Taco Shop
Judy Roberts
Robert's on Wall Street
Taylor Robertson
Rohr Fitness & Safety, Inc
Romantique
Roseman Clinic for Chinese
Pat and Darlene Ross
Whit Ross
Round Butte Seed Growers Inc
Round Table Pizza
Bonnie and Ronald Ruby
Marilyn Russell
Vicki and Vic Russell
Wendy and Hugh Saffel
Vernon and Loy Sampels
Barbara Sanguinetti
The Sather House
Saxon's Fine Jewelers
Scandinavian Designworks
Lawrence and Wendy Schechter
Tyna Schroeder Kirchner
Kirk and Rochelle Schueler
Erich and Paige Schultz
Christian and Paula Schuster
Schwabe, Williamson & Wyatt, PC
Rodney and Jennifer Scinto
Keith and Doreen Seaber
Second Street Theater
Security Pros, Inc.
Bill Seiden
Mike Sequeira
Lewis and Susan Sharp
Richard and Robyn Sharp
Jim and Barbara Shaw
Shear Illusions
John and Linda Shelk Foundation
Pauline Shelk

Shilo Inn Suites Hotel
The Shops at the Old Mill
Phyllis Short
William Shotton and Diane Reed
Ray Shumway and Jacquie Bushong
Will and Gerry Silva
Dennis Simenson
Madeline Simmons
Kiri and Pat Simning
Paula Simone
Bill Simpkins
Sisters Rodeo Association
Betsy and Jordy Skovborg
Slow Food High Desert Oregon
Smith Barney
Bill and Trish Smith
Dan Smith
Gloria Smith
Katherine Smith
Marney Smith
Mike Smith and Amanda Blockley
Todd and Julie Smith
Ron Smyth
Specialty Cigars International
Mike and Peggy Spedick
Riki Sperr-Strong and Rob Sperr-Strong
Spirit of Pilates
Oscar and Barbara Spliid
Ray Spreier
Nikki Squire
St. Charles Medical Auxiliary
St. Charles Medical Center
Stahancyk, Gearing, Rackner & Kent
Marvin and Sharon Starer
Sterling Transportation, Inc.
Steve Scott & Co. Realtors
Steven Apfelbaum, DDS
Steven M. Rogers, DDS
Janet Stevens
Frances Stevenson
Rebecca Stewart
The Stitchin' Post
David and Marda Stolar
Peter and Julie Stott
Thomas and Melissa Strange
John and Molly Straw
Jeff and Amanda Stuermer
Subway Sandwich Shop
Eleanor Sumpter-Latham and Jim Latham
Sun Country Tours
Sun Mountain Sports Center
Sun Publishing
Sunrise Lions Club

Donors

Sunriver Music Festival
 Sunriver Nature Center
 Sunriver Resort
 Sunriver Women's Club
 Suzie's Shop on the Corner
 Bill and Lynda Swarts
 Linda and Glenn Swearingen
 Jim and Ardyce Swift
 Don and Carolyn Swisher
 Greg and Diane Syverson
 Table 28, Inc.
 Katherine Tank
 Jonathon and Anouk Tapper
 Dan and Joyce Taylor
 Sandy Taylor
 Janey and Oran Teater
 Terpsichorean Dance Studio
 Joe and Ruth Thalhofer
 Karen Theodore
 Gregory Thoma

Richard and Shari Thompson
 Ambers and Bonnie Thornburgh
 TLC Catering
 The Trading Post
 Norma and Carl Tucker
 Cassie Tuft
 Tumalo Feed Company
 Lolly Tweed and Brad Mulvahill
 Tykeson Foundation
 Kristin Udvari
 Unicel
 Union Pacific Corporation
 University of Oregon Foundation
 Jerry and Robin Upham
 US Bank
 Todd and Susan Vallie
 Tom and Jean Ann Van Hemelryck
 Verizon Foundation
 Vickery Viles and John Millslagle

Joyce Vincik
 Vino Mercato
 James and Robin Virgin
 Visuality
 Roger Vlach
 Dan and Shirley Vogt
 Voila
 Janis Volz
 John and Fran von Schlegell
 Daniel Wadosky
 Gil Waggoner
 Mary and Michael Wagner
 Greg and Mylene Walden
 Thomas and Georgie Walker
 Rebecca Walker-Sands and James Sands
 Kathleen Walsh
 Margaret and Loyd Walsh
 Wanderlust Tours
 Jan and Jody Ward

Tom and Dawn Ware
 Betsy Warriner
 Waterworks
 Jack and Marilyn Watts
 Jim and Tamara Weaver
 Nola Weber
 Mary Weinberg
 William and Margery Weir
 Pete and Pat Welk
 Thomas and Katie Wendel
 West Shore Forest Products
 West Side Bakery
 Ben and Libby Westlund
 Ellyce and Dave Whalen
 Gene and Josie Whisnant
 Jeremy and Regan White
 Chris and Jan Wick
 Widgi Creek Golf Course
 Wild Oats Market
 Wildflowers of Oregon

Willametta K. Day Foundation
 William Smith Properties, Inc.
 Linda and Buzz Williams
 D. Joe Willis
 Barbara Wilson
 Chris Wilson
 Wings of the Cascades
 Lezlie Winsor
 William and Margaret Wise
 Mark and Susan Wolfkeil
 Wood Awakening
 Betty Young
 James and Kelly Ann Young
 Youngberg Hill Inn
 Nancy Zavacki
 Gene and Sue Zinkgraf
 Doug and Vivian Zirker
 Roger Zollman
 Lyle Zurflu

Memorials

IN MEMORY OF MARGARET BACKSTROM
 PAUL H. DUDLEY

IN MEMORY OF JEANETTE BERGER
 WILLIAM SMITH PROPERTIES, INC.

IN MEMORY OF LEO BISHOP
 ALICE BISHOP

IN MEMORY OF MIKE BORDEN
 WILLIAM SMITH PROPERTIES, INC.

IN MEMORY OF IRENE BOSTELMAN
 FRANK CAMMACK
 DONALD SWISHER

IN MEMORY OF ED DENNISTON
 WILLIAM SMITH PROPERTIES, INC.

IN MEMORY OF LESLEY EASTWOOD
 WILLIAM SMITH PROPERTIES, INC.

IN MEMORY OF LILLIAN FEHRENBACHER
 WILLIAM SMITH PROPERTIES, INC.

IN MEMORY OF JOE FREEDMAN
 DAVID L. BOURKE
 MARY BRYANT
 CIDA
 DESIGN OF THE TIMES
 BEVERLY B. DOWNER

Ron Federspiel
 Yvonne Huson-Boni
 Neal Huston
 Kirk Johansen
 Leslie A. Sundet, CPA
 Mazama Capital Management, Inc.
 Patricia Moss
 Michael W. Olin
 Jon Rhoads
 Janine Robberson
 John and Linda Shelk Foundation
 William T. Swarts
 William Smith Properties, Inc.

In Memory of Pam Goldsmith
 William Smith Properties, Inc.

In Memory of Robert Graves
 William Smith Properties, Inc.

In Memory of Ray Haertel
 Nola S. Weber

In Memory of Bert Hagen
 Peter L. Morbeck
 Janine Robberson
 William Smith Properties, Inc.

In Memory of Ron Hagerman
 Nola S. Weber

IN MEMORY OF ETHEL HOFSTETTER
 RICHARD HOFSTETTER

IN MEMORY OF MARIE KENNEDY
 WILLIAM SMITH PROPERTIES, INC.

IN MEMORY OF JACK LEVIN
 DAVID L. BOURKE

IN MEMORY OF NEVA MCCALLUM
 MARGARET W. HONEYMAN

IN MEMORY OF WILLY MCCOOL
 ELIZABETH R. ACARRIGUI
 FRANCIE BEREZO
 NIGEL DABBY
 JAMES DEHART
 ROBERT M. HAKALA
 KATHERINE S. HODDEN
 DOROTHY MCCOOL
 JEFF MCKINNEY
 MILLER LUMBER COMPANY
 JAMES R. MOORE
 JAMES B. NORTHROP
 PACIFIC RIM BANCORP, INC.
 PARR LUMBER
 SARAH I. PENGLY
 CHARIE RICE
 LEWIS I. SHARP
 JANET STEVENS
 JAMES D. VIRGIN
 MARY A. WEINBERG

IN MEMORY OF RAYMOND MCNAIR
 CONNIE MILLER

IN MEMORY OF JEAN OGDahl
 WILLIAM SMITH PROPERTIES, INC.

IN MEMORY OF BRAD PEASE
 WILLIAM SMITH PROPERTIES, INC.

IN MEMORY OF DON PETERS
 WILLIAM SMITH PROPERTIES, INC.

IN MEMORY OF BOB RHOADS
 JUDY A. CANDEE
 SHIRLEY RAY
 WILLIAM SMITH PROPERTIES, INC.

IN MEMORY OF YSIDRO SERRANO
 WILLIAM SMITH PROPERTIES, INC.

IN MEMORY OF SUSAN SHORT
 PHYLLIS E. SHORT

IN MEMORY OF JACK VOOS
 WILLIAM SMITH PROPERTIES, INC.

IN MEMORY OF BARBARA WILSON
 BARBARA J. WILSON

Coming Events

Nancy R. Chandler Visiting Scholar
Helen Lessick · "The Human Condition" Installation Piece · Feb. 3 through 28

Reception opening 4 to 6:30 p.m., Feb. 3

Thirtieth Anniversary of Meal of the Year

Get your tickets early as it will be a sell-out event.

One of the oldest charity galas in the area, the Meal of the Year and Taste of the Town are held on the campus of Central Oregon Community College. Both evenings benefit COCC Foundation scholarships and other Foundation programs.

Meal of the Year · March 5, 2005

Tickets \$110 · Corporate tables \$1250

Fabulous dinner prepared by High Desert Chapter of the American Culinary Federation plus silent and limited live auctions. Live auction items limited to 18 to allow dancing.

Taste of the Town · March 4, 2005

\$30 tickets in advance · \$40 at the door.

Twenty-five of the best Restaurants in town, Sunriver Resort, Ernesto's, Hans and many more are returning. Tickets will be available at Boomtown and the COCC Bookstore.

President's Scholarship Lunch · May 18, 2005



COCC FOUNDATION BOARD OF TRUSTEES

DANA BRATTON
PATTI CARLSON
DOUG DOWNER
RON FEDERSPIEL
PAT HANNA
RON HENDERSON
JOAN HINDS
YVONNE HUSON-BONI
JOHN K. JAMES
KIRK JOHANSEN
EILEEN McLELLAN
CHARLIE NAFFZIGER
JOHN OVERBAY
MARYANNE PAYNE
JANINE ROBBERSON
VICKI RUSSELL
BETSY SKOVBOG
TRISH SMITH
CHRIS WICK



CENTRAL
OREGON
COMMUNITY
COLLEGE
FOUNDATION

Central Oregon Community College Foundation
2600 NW College Way
Bend, Oregon 97701

ADDRESS SERVICE REQUESTED

Nonprofit Org
US Postage
PAID
Bend OR
Permit No. 87

COCC BOARD OF DIRECTORS

DANA L. BRATTON
ANTHONY DORSCH
JOYCE GARRETT
CONNIE LEE
JOHN OVERBAY
DONALD V. REEDER
JOHN RHETTS