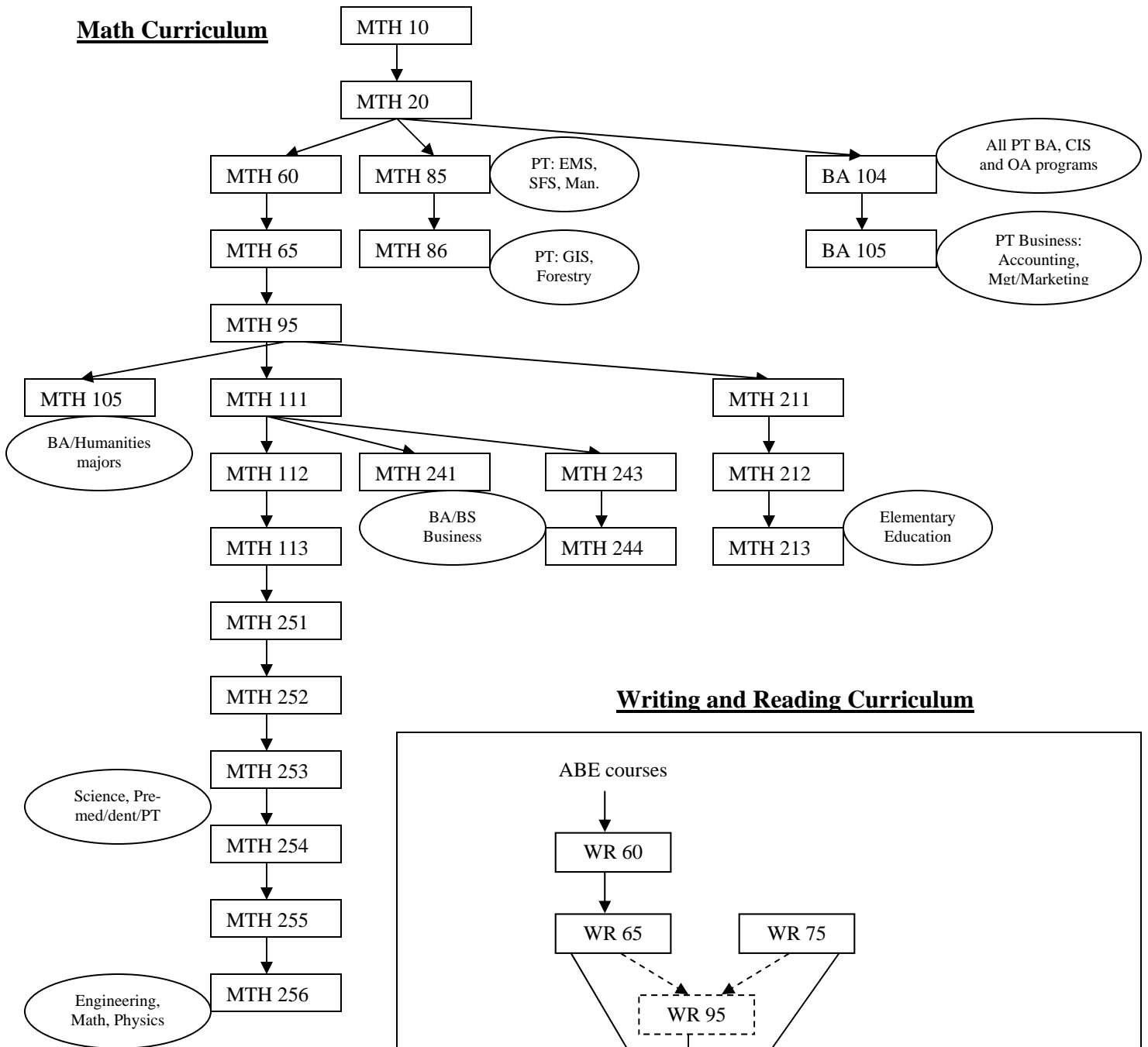
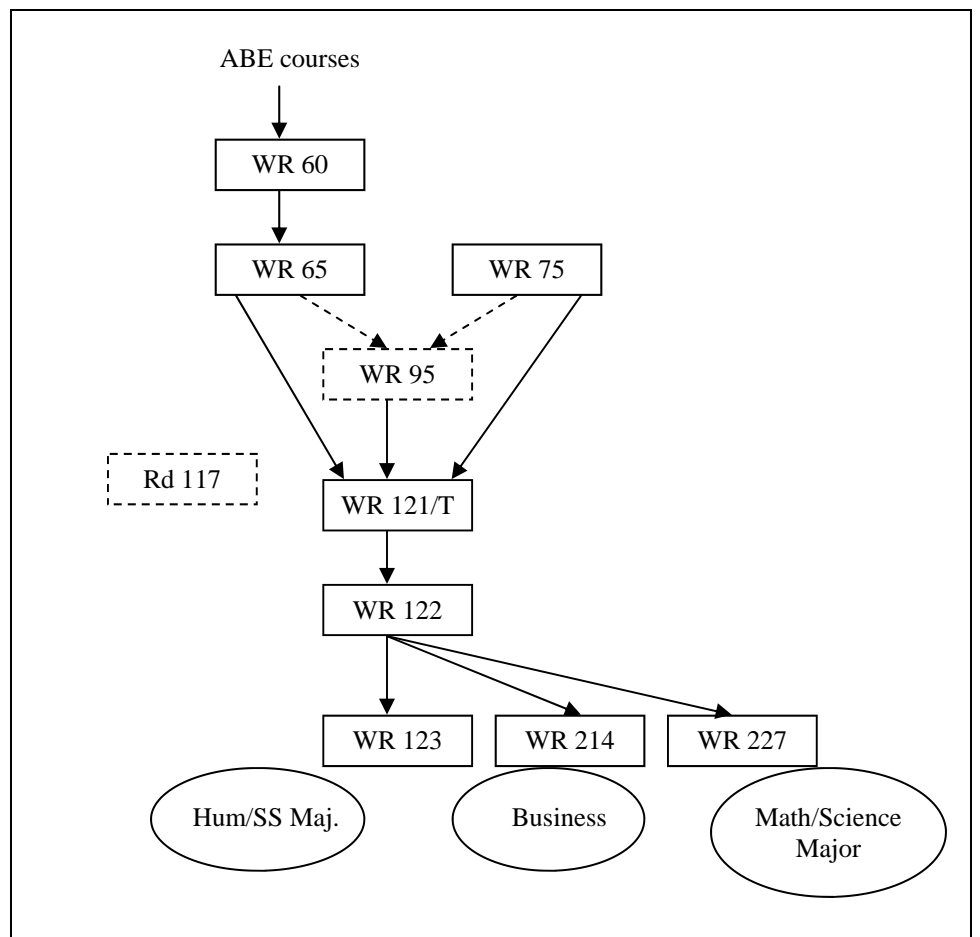


Math Curriculum



Writing and Reading Curriculum





COCC Placement Test

Asset scores and placement guidelines

Reading and Writing

Reading score*	Writing score	Course placement
Students with reading and/or writing scores between 23-27 should see a composition advisor; the student may benefit from ABE, ELL (504-2950), or Disability Services (383-7583).		
28-36	28-53	WR 60
37-42	28-36	WR 60
	37-53	WR 65
43-53	28-36	WR 60
	37-42	WR 65 or 75
	43-53	WR 121 **

** Scores or prerequisites are enforced in WR 121; registration is only permitted for students who have either a placement test of 43 or above or have successfully completed WR 65, WR 75 or WR 95.

Math

If you have ANY questions about your math placement, please see a math instructor as soon as possible!

1. Numerical Skills

If your score was...	We recommend that you take...
23 – 36	MTH 10
37 – 39	MTH 10 or MTH 20 if your fraction skills are strong
40 – 43	MTH 20
44 – 47	MTH 20 or MTH 60; talk to an advisor to determine best placement
48 – 55	MTH 60/MTH 85, or take the Elementary Algebra test

2. Elementary Algebra

If your score was...	We recommend that you take...
23 – 26	Take the Numerical Skills Test
27 – 38	MTH 60/MTH 85
39 – 45	MTH 60 or MTH 65 (Note: Mth 65 is the 2nd term of a 2-term Elementary Algebra sequence; talk to an advisor to determine best placement.)
46 – 51	MTH 65
52 – 55	MTH 95 or BA 104, or take the Intermediate Algebra test

3. Intermediate Algebra

If your score was...	We recommend that you take...
23 – 29	MTH 60/MTH 85, or take a lower test
30 – 33	MTH 65
34 – 36	MTH 65 or MTH 95/BA 104 (talk to an advisor to determine best placement)
37 – 47	MTH 95/BA 104
48 – 51	MTH 95 or MTH 105**(if approved by your advisor or a math teacher)
52 – 55	See advisor or take College Algebra Test

4. College Algebra

If your score was...	We recommend that you take...
23 – 28	Take Intermediate Algebra test
29 – 34	MTH 95/BA 104
35 – 44	MTH 105**, MTH 111 or MTH 211*
45 – 50	MTH 105**, MTH 111 or MTH 211*, or see math teacher for higher placement
51 – 55	See Advisor