



Central Oregon Community College

Accuplacer Placement Test Guidelines

Writing Placement Guidelines

Reading Comprehension Score	Sentence Skills Score	Course Placement
20-45	20 or higher	ABS*
46-65	20-50	ABS*
	51 or higher	WR 60
66-80	20-50	ABS*
	51-65	WR 60
	66 or higher	WR 65
81 or higher	20-50	ABS*
	51-65	WR 60
	66-94	WR 95 (or 65)
	95 or higher	WR 121

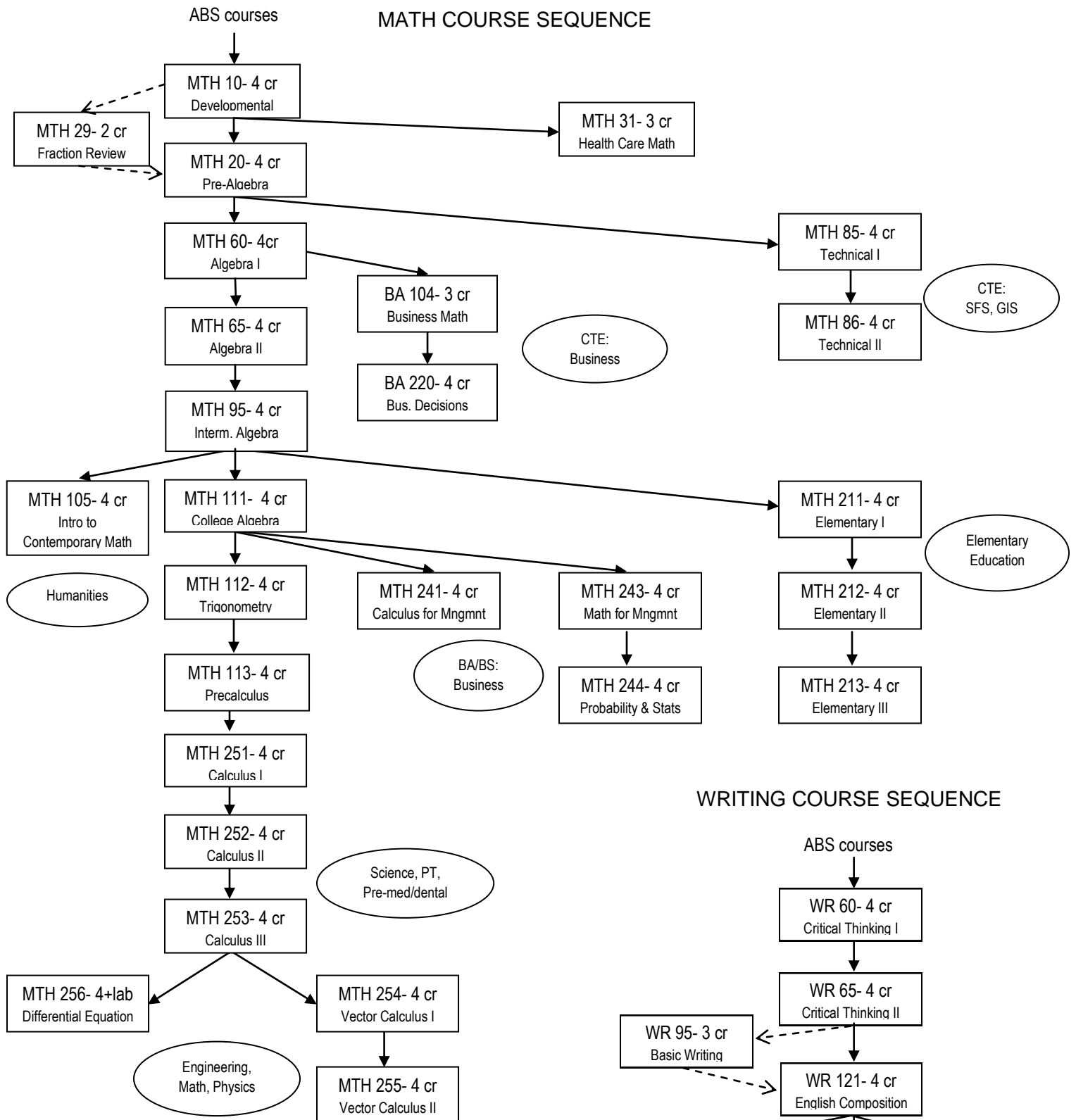
Math Placement Test Guidelines

Students who have questions or concerns about their math placement should see a math teacher as soon as possible.

Math Test	Score	Course Placement
Arithmetic	20-30	Math 10 or ABS*
	31-56	Math 10
	57-74	Math 20 or 31, depending on program (or Math 10 if fraction skills are not strong)
	75-120	Math 60,85 or CUL 90, depending on program
Elementary Algebra	21-38	See Arithmetic score for placement
	39-67	Math 65, 85 or BA 104, depending on program
	68-120	See College Math score for placement
College Math	20-35	Math 95
	36-58	Math 105, 111 or 211, depending on program
	59-79	Math 112, 241 or 243, depending on program
	80-120	Math 251

* Adult Basic Skills (ABS) are lower-cost, non-credit courses. Students with scores in this range may be best served by COCC's Adult Basic Skills non-credit courses in reading, writing & math. Visit abe.cocc.edu or call 541.504.2950 for more information.

MATH COURSE SEQUENCE



WRITING COURSE SEQUENCE

